

WHAT IS SAFEGUARDING?

Manchester United believes that it is always unacceptable for a child or adult at risk to experience abuse of any kind and recognises its responsibility to safeguard their welfare by a commitment to practice which protects them.

CHILD

- Anyone under 18 years

ADULT AT RISK

- Anyone aged 18 or over who;
- Has needs for care and support
- Is experiencing, or at risk of, abuse or neglect;
- As a result of those care and support needs is unable to protect themselves from either the risk of, or the experience of abuse or neglect



WHAT IS SAFEGUARDING?

If you are concerned about a child or adult at risk please contact the safeguarding team:

Joanna Madyarchyk (Head of Safeguarding)
07780 956 098
joanna.madyarchyk@manutd.co.uk

Elise Noblet (Safeguarding Advisor)
07900 703 951
elise.noblet@manutd.co.uk

Charlotte O'Prey (Safeguarding Advisor)
07721 423 135
charlotte.oprey@manutd.co.uk

Adam Green (Boy's Academy Safeguarding)
07500854817
adam.green@manutd.co.uk

General enquiries & Safeguarding referrals
safeguarding@manutd.co.uk

Your designated safeguarding officer is

.....
For further information

<https://www.manutd.com/en/club/safeguarding>

ChildLine 0800 11 11

NSPCC 0808 500 5000 (24 Hour)

Police 101 (999 Emergency)

The FA Safeguarding Team 0800 800 5000

Unite.
Safeguarding children together.

Unite.
Safeguarding children together.

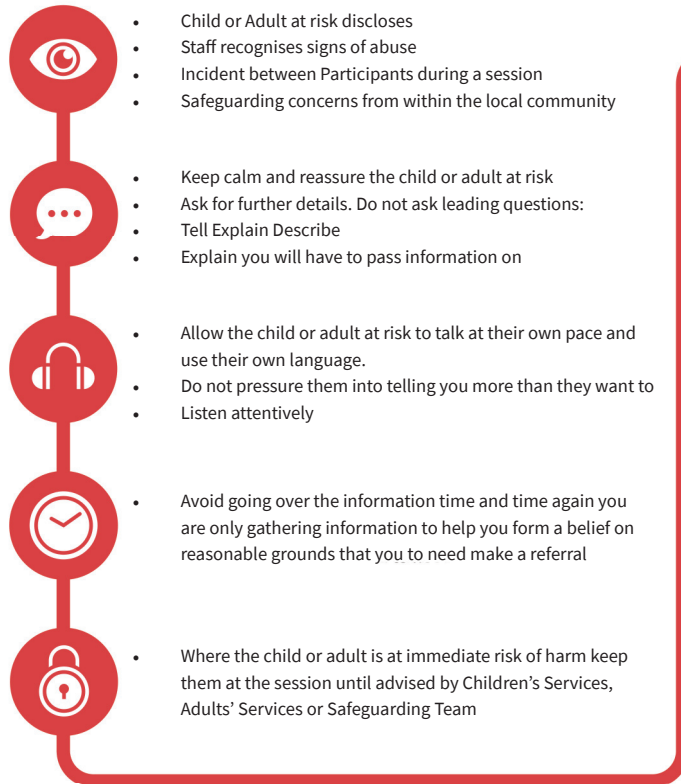


SAFEGUARDING IS EVERYONE'S RESPONSIBILITY

We will seek to safeguard children & adults at risk by:

- Valuing them by hearing, listening and respecting them.
- Adopting safeguarding guidelines and best practice through procedures and a code of conduct for staff and volunteers.
- Safely recruiting staff and volunteers through a safer recruitment process, ensuring all necessary vetting checks are made.
- Sharing information about safeguarding and best practice.
- Sharing information about concerns with the appropriate agencies (statutory agencies and affiliated football), in a confidential manner.
- Providing effective management for staff and volunteers through supervision, support, mentoring and training.

RESPONDING TO ALLEGATIONS OR SUSPICIONS OF ABUSE



TYPES OF ABUSE AND HARM

- | | | |
|--------------------|-----------------------------|-----------------------------|
| • NEGLECT | • PSYCHOLOGICAL | • FEMALE GENITAL MUTILATION |
| • PHYSICAL | • FINANCIAL | • FORCED MARRIAGE |
| • SEXUAL | • ORGANISATIONAL | • HATE CRIME |
| • EMOTIONAL | • DISCRIMINATORY | • HONOUR-BASED VIOLENCE |
| • DOMESTIC ABUSE | • BULLYING | • MODERN SLAVERY |
| • ACTS OF OMISSION | • CHILD SEXUAL EXPLOITATION | • PREVENT-RADICALISATION |

